



eCYLINDER

Leitura de Cartão | Lectura de la Tarjeta | Card Reading



eCYLINDER

O eCylinder tem um funcionamento de alta precisão. A sua praticidade permite a rápida substituição dos cilindros tradicionais, elevando, desta forma as fechaduras existentes, a um novo e avançado limiar tecnológico.

El eCylinder tiene un funcionamiento de alta precisión. So sencillez permite la rápida sustitución de los cilindros tradicional, elevando de esta forma las cerraduras existentes a un nuevo y avanzado patamar tecnológico.

The eCylinder has a high precision working. Its practicality allows a quick replacement of the traditional cylinders bringing thereby the existing locks, to a new and advanced technological level.

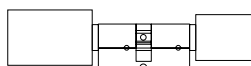
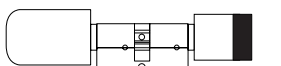
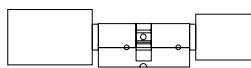
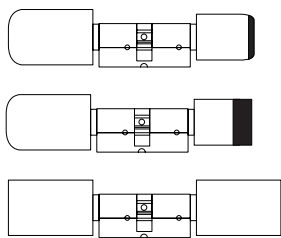
Utilizador com entrada multi-nível!

Utilizador con entrada multinivel!

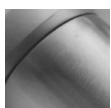
Multi-level user entry!

ESPECIFICAÇÕES/ ESPECIFICACIONES/ SPECIFICATIONS

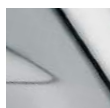
OPÇÕES DE DESIGN / OPCIONES DE DISEÑO / DESIGN OPTIONS



POR ENCOMENDA
POR PEDIDO
BY ORDER



INOX SATINADO
INOXIDABLE SATÉN
STAINLESS SATIN



INOX POLIDO
INOX PULIDO
INOX POLISHED



INOX PVD



BRANCO
BLANCO
WHITE



PRETO
NEGRO
BLACK



OUTRAS CORES POR ENCOMENDA
OTROS COLORES POR PEDIDO
OTHER COLORS BY ORDER

ESPECIFICAÇÕES COM/ ESPECIFICACIONES CON/ SPECIFICATIONS WITH SOFTWARE

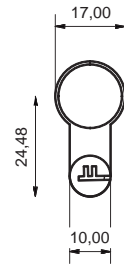
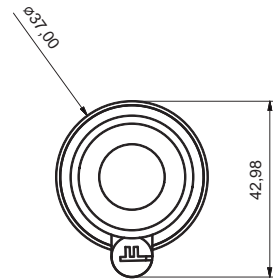
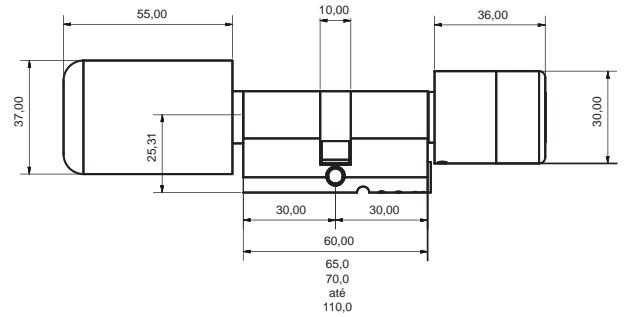
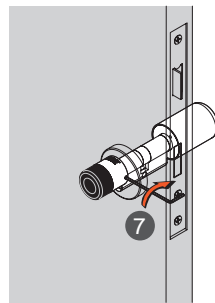
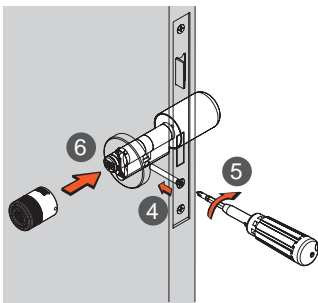
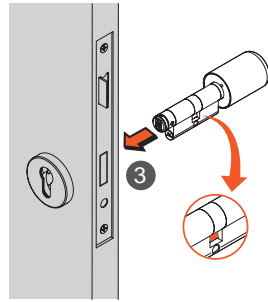
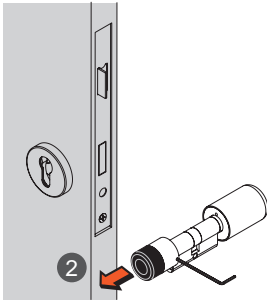
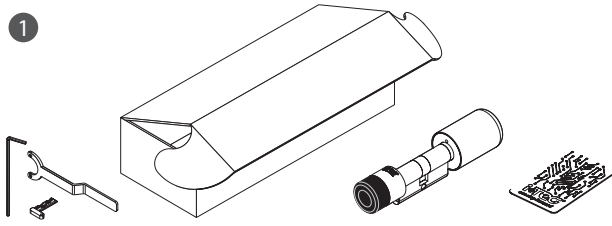
 Aço Inoxidável Acero Inoxidable Stainless Steel	 Tempo aberto: 8s Tiempo abierto: 8s Open time: 8s	 Sem Fios Sin Hilos Wireless
 Robusto Robusto Robust	 Abertura de emergência: Chave Mecânica Apertura de emergencia: Llave Mecánica Emergency opening: Mechanical key	 LED: Azul / Vermelho LED: Azul / Rojo LED: Blue / Red
 Calendário Calendario Calendar	 Certificações: CE RoHS Certificaciones: CE RoHS Certifications: CE RoHS	 Consumo estático: 60µA Consumo estático: 60µA Static consumption: 60µA
 Acessos Futuros Accesos Futuros Futur Access	 Alta compatibilidade com fechaduras Alta compatibilidad con cerraduras High compatibility with locks	 Espessura da porta: 30-90mm Espesor de la puerta: 30-90mm Door thickness: 30-90mm
 Master Card	 Cilindro de perfil Europeu Cilindro de perfil europeo European profile cylinder	 Informação Bateria Baixa Información de Bateria Baja Low Battery Warning
 Cartão Lista Negra Tarjeta Lista Negra Blacklist Card	 Peso: depende do tamanho Peso: depende del tamaño Weight: depends on the size	 3.6V Li-SoCL2 3.6V Li-SoCL2 3.6V Li-SoCL2
 Recolha de Dados Recolección de Datos Data Collection	 Mifare 1k, S70, Compatível c/ NFC Mifare 1k, S70, Compatible c/ NFC Mifare 1k, S70, Compatible w/ NFC	 Consumo em funcionamento: 150mA Consumo en funcionamiento: 150mA Operating consumption: 150mA
 Memória Memoria Memory	 Proteção IP43 Int. / IP56 Ext. Protección: IP43 Int. / IP56 Ext Protection: IP43 Int. / IP56 Ext	 Humidade : 20%-97% Humedad : 20%-97% Humidity : 20%-97%
 Gravação de Registos: 500 Grabación de Registros: 500 Recording Registries: 500	 Capacidade de leitura: <10cm Capacidad para lectura: <10cm Read distance: <10cm	 Temperatura de funcionamento: -25°C ~ +70°C Temperatura de funcionamiento: -25°C ~ +70°C Work temperature: -25°C ~ +70°C
 Backup Diário Backup Diario Daily Backup	 ∞ (infinitos) utilizadores ∞ (infinitos) usuarios ∞ (infinite) users	
 Taxa de Reconhecimento: <0.5segs Tasa de Reconocimiento: <0.5segs Recognition Timing: <0.5s	 Níveis de Utilizadores Niveles de Usuario User Levels	

ESPECIFICAÇÕES SEM/ ESPECIFICACIONES SIN/ SPECIFICATIONS WITHOUT SOFTWARE

 Robusto Robusto Robust	 Cartão de Gestão Tarjeta de Gestión Management Card	 Cilindro de perfil Europeu Cilindro de perfil europeo European profile cylinder
 Aço Inoxidável Acero Inoxidable Stainless Steel	 Master Card	 Consumo estático: 60µA Consumo estático: 60µA Static consumption: 60µA
 128 Utilizadores 128 Usuarios 128 Users	 Tempo aberto: 8s Tiempo abierto: 8s Open time: 8s	 Espessura da porta: 30-90 mm Espesor de la puerta: 30-90 mm Door thickness: 30-90 mm
 Memória Memoria Memory	 Abertura de emergência: Chave Mecânica Apertura de emergencia: Llave Mecánica Emergency opening: Mechanical key	 Informação Bateria Baixa Información de Bateria Baja Low Battery Warning
 Sem Fios Sin Hilos Wireless	 Alta compatibilidade com fechaduras Alta compatibilidad con cerraduras High compatibility with locks	 3.6V Li-SoCL2 3.6V Li-SoCL2 3.6V Li-SoCL2
 Taxa de reconhecimento: <0.5segs Tasa de Reconocimiento: <0.5segs Recognition timing: <0.5segs	 Mifare 1k, S70, Compatível c/ NFC Mifare 1k, S70, Compatible c/ NFC Mifare 1k, S70, Compatible w/ NFC	 Consumo em funcionamento: 150mA Consumo en funcionamiento: 150mA Operating consumption: 150mA
 Certificações: CE RoHS Certificaciones: CE RoHS Certifications: CE RoHS	 Proteção contra ingresso: IP43 Int. / IP56 Ext. Tipo de protección: IP43 Int. / IP56 Ext Ingress protection: IP43 Int. / IP56 Ext	 Humidade : 20%-97% Humedad : 20%-97% Humidity : 20%-97%
 LED: Azul / Vermelho LED: Azul / Rojo LED: Blue / Red	 Peso: depende do tamanho Peso: depende del tamaño Weight: depends on the size	 Temperatura de funcionamento: -25°C ~ +70°C Temperatura de funcionamiento: -25°C ~ +70°C Work temperature: -25°C ~ +70°C
 Stand Alone / Modo software Stand Alone / Modo software Stand Alone / Software Mode	 Capacidade de leitura: <10cm Capacidad para lectura: <10cm Read distance: <10cm	 Temperatura de armazenamento: -25°C ~ +70°C Temperatura de almacenamiento: -25°C ~ +70°C Storage temperature: -25°C ~ +70°C

DESENHO DE INSTALAÇÃO
PLANO DE INSTALACIÓN
INSTALLATION GUIDE

DIMENSÕES
DIMENSIONES
DIMENSIONS



eCYLINDER					
30 IN x 30 OUT = 60mm	Inox / Stainless Steel	999060140009	40 IN x 30 OUT = 70mm	Inox / Stainless Steel	999060140034
32.5 IN x 32.5 OUT = 65mm	Inox / Stainless Steel	999060140019	30 IN x 55 OUT = 85mm	Inox / Stainless Steel	999060140035
35 IN x 35 OUT = 70mm	Inox / Stainless Steel	999060140020	35 IN x 50 OUT = 85mm	Inox / Stainless Steel	999060140036
37.5 IN x 37.5 OUT = 75mm	Inox / Stainless Steel	999060140021	35 IN x 55 OUT = 90mm	Inox / Stainless Steel AWK	999060140037
40 IN x 40 OUT = 80mm	Inox / Stainless Steel	999060140022	50 IN x 30 OUT = 80mm	Inox / Stainless Steel AWK	999060140038
42.5 IN x 42.5 OUT = 85mm	Inox / Stainless Steel	999060140023	50 IN x 40 OUT = 90mm	Inox / Stainless Steel AWK	999060140039
45 IN x 45 OUT = 90mm	Inox / Stainless Steel	999060140024	30 IN x 35 OUT = 65mm	Inox / Stainless Steel AWK	999060140040
47.5 IN x 47.5 OUT = 95mm	Inox / Stainless Steel	999060140025	35 IN x 40 OUT = 75mm	Inox / Stainless Steel AWK	999060140041
50 IN x 50 OUT = 100mm	Inox / Stainless Steel	999060140026	40 IN x 45 OUT = 85mm	Inox / Stainless Steel AWK	999060140042
55 IN x 55 OUT = 110mm	Inox / Stainless Steel	999060140027	50 IN x 35 OUT = 85mm	Inox / Stainless Steel AWK	999060140043
60 IN x 60 OUT = 120mm	Inox / Stainless Steel	999060140028	45 IN x 50 OUT = 95mm	Inox / Stainless Steel AWK	999060140044
OE 32.5 IN x 32.5 OUT = 65mm	Inox / Stainless Steel	999060140029	35 IN x 65 OUT = 100mm	Inox / Stainless Steel AWK	999060140045
HE 32.5 IN x 32.5 OUT = 65mm	Inox / Stainless Steel	999060140030	35 IN x 30 OUT = 65mm	Inox / Stainless Steel AWK	999060140046
30 IN x 50 OUT = 80mm	Inox / Stainless Steel	999060140031	40 IN x 35 OUT = 75mm	Inox / Stainless Steel AWK	999060140047
30 IN x 40 OUT = 70mm	Inox / Stainless Steel	999060140033	45 IN x 40 OUT = 85mm	Inox / Stainless Steel AWK	999060140048